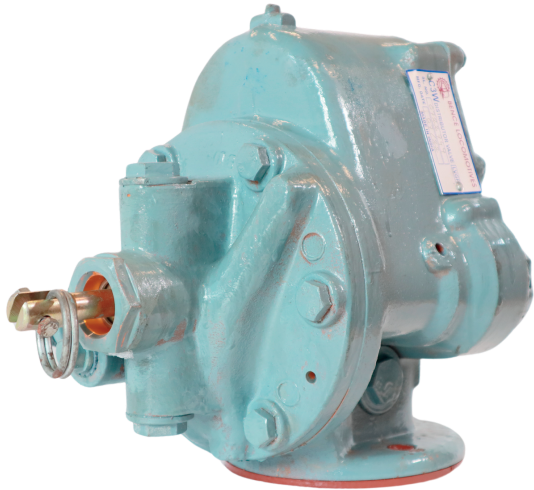




# Bence Locomotives

(Unit of Bence Auto Industries)

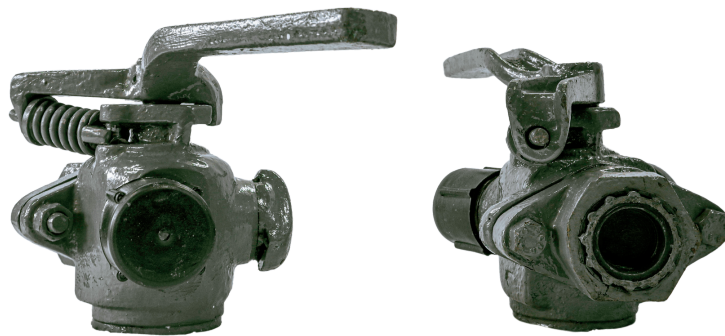
Manufacturer of Rail Air Brake Parts



**Distributor Valve**



**Brake Hose**



**Angle Cock (R.H) ,(L.H)**

 [www.raillocodistributorvalve.com](http://www.raillocodistributorvalve.com)

 [raillocodistributorvalve@gmail.com](mailto:raillocodistributorvalve@gmail.com)










# Bence Locomotives

(Unit of Bence Auto Industries)

"Every Steps in Rail & Locomotive Parts"

## Air Brakes Parts for Rail & Locomotives

Sr. No.	Description	Pictures	Approximate Unit Weight In Kgs
1	Distributor Valve Equivalent to (C3W)		15.000
2	Automatic Two Stage Distributor Valve Equivalent to (C3W2)		18.000
4	Relay Valve		0.850
5	Angle Cock		3.500
6	Sand Ejector		5.000
7	Brake Hose & Hose Coupling		2.700
8	Air Pressure Reducing Valve		2.900

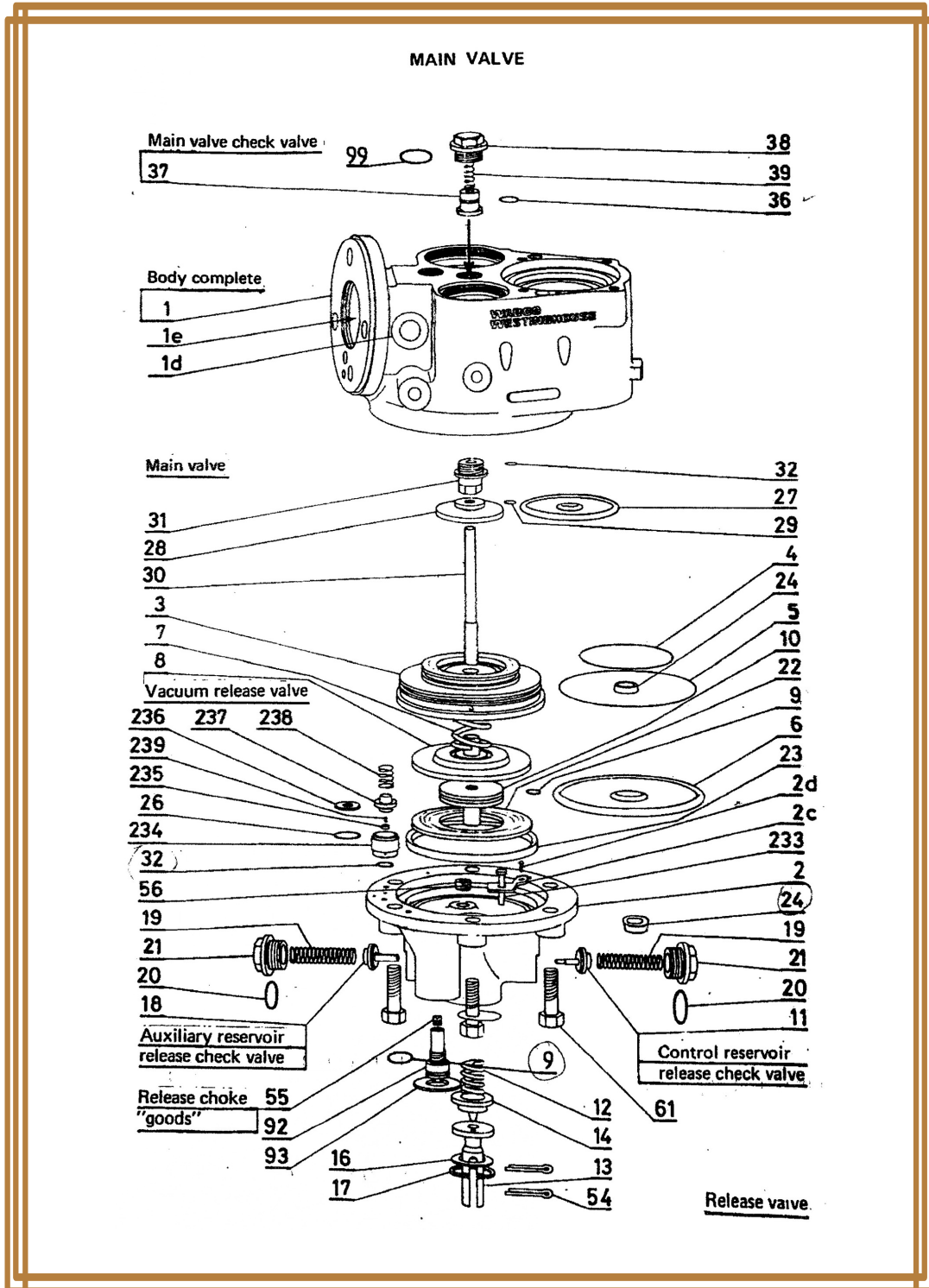


# Bence Locomotives

(Unit of Bence Auto Industries)

"Every Steps in Rail & Locomotive Parts"

## Distributor Valve Parts Assembly









# Bence Locomotives

(Unit of Bence Auto Industries)

"Every Steps in Rail & Locomotive Parts"

## Technical Specifications

Features	Specifications	
	Freight	Passenger
Operation Pressure (Release Position)	5 Bar	6 Bar
Filling time of train to 95% of brake cylinder Pressure	18-30 sec	3-6 sec
Release time of train after Full-Service brake application	Max.70 Sec	Max.25.Sec
Control Reservoir Volume	7,5 Liters	
Auxiliary Reservoir Volume	100 Liters	
Auxiliary Reservoir filling time (4.8 bar)	240-300 Sec.	
Recharging of pressure losses in the brake cylinder	Must be ensured	
Operational reliability of the brake at operating pressure of 4 bar and 6 bar	Must be ensured	
Brake Cylinder Diameter	14”(355)	
Brake Cylinder Stroke	100 ± 10 mm	
Maximum Brake Cylinder Pressure (Full application)	3,8 ± 0.1 Bar	
Emergency application Pressure	4.1 ± 0.15 Bar	
Brake pipe Diameter	1.25 Inch(31.75)	

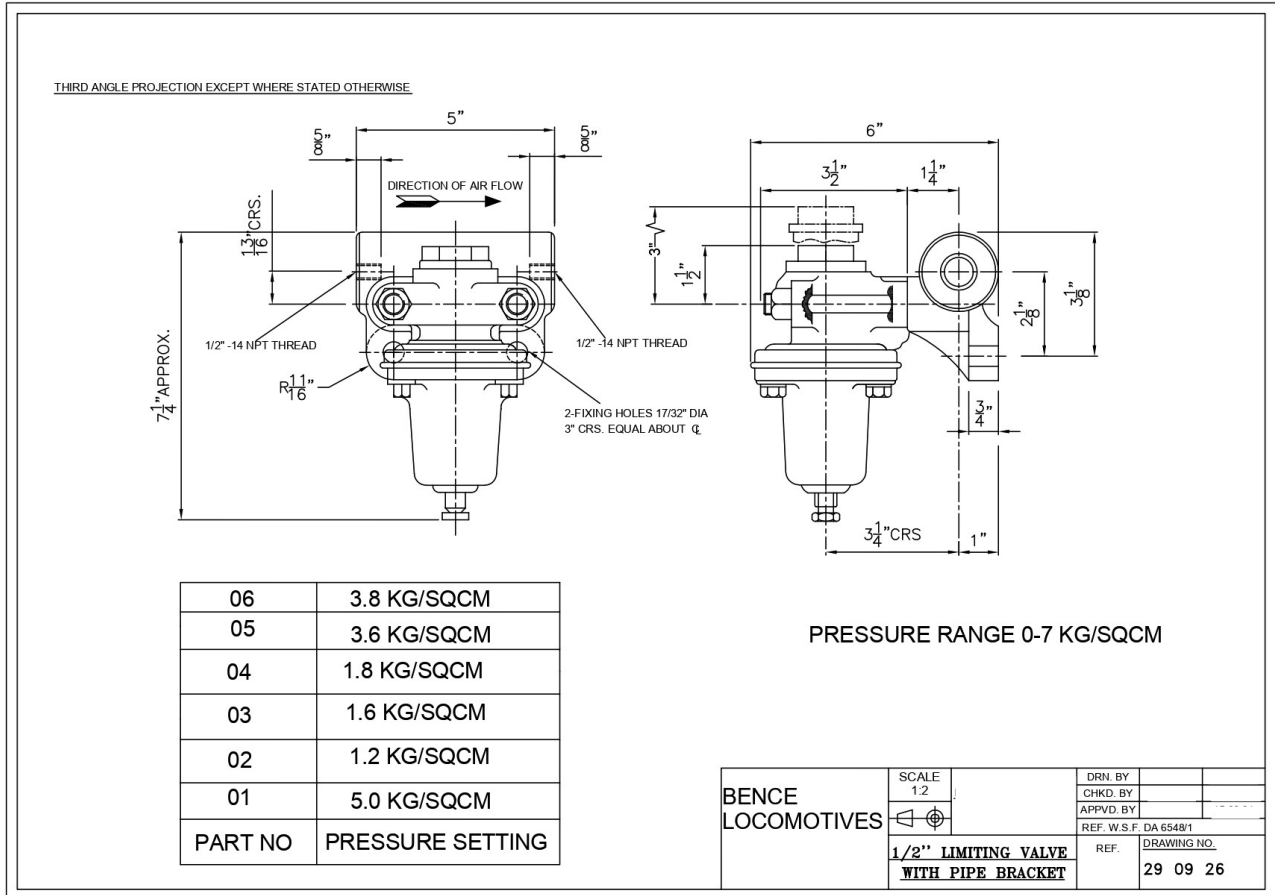


# Bence Locomotives

(Unit of Bence Auto Industries)

"Every Steps in Rail & Locomotive Parts"

## Air Pressure Reducing Valve



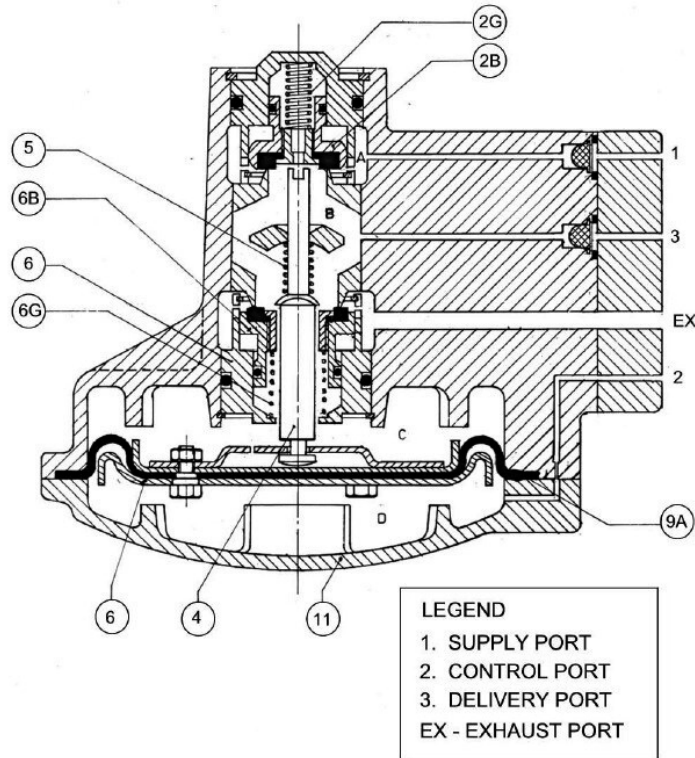


# Bence Locomotives

(Unit of Bence Auto Industries)

"Every Steps in Rail & Locomotive Parts"

## Relay Valve



C-2 W RELAY VALVE

Material of Construction: Cast Iron  
Weight Approximate: 4.5 KG



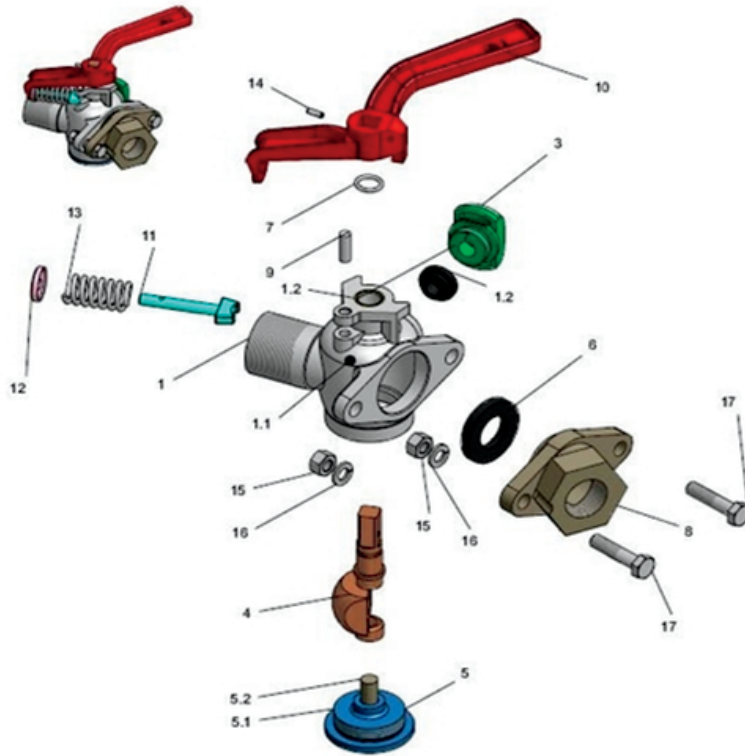


# Bence Locomotives

(Unit of Bence Auto Industries)

"Every Steps in Rail & Locomotive Parts"

## Angle Cock R.H & L.H



S.NO.	DESCRIPTION
1	HOUSING S/A
1.1	HOUSING
1.2	BUSH
2	SEALING RING
3	EXHAUST PLUG
4	SPHERICAL SEGMENT PLUG
5	LOCKING SCREW S/A
5.1	LOCKING SCREW
5.1	PIN
6	SEALING RING
7	'O' RING
8	FLANGE
9	RIVETING PIN
10	HANDLE
11	PIN
12	WASHER
13	COMPRESSION SPRING
14	DOWEL PIN
15	HEX. HD. NUT (M10)
16	SPRING WASHER
17	HEX. HD. BOLT (M10x40)





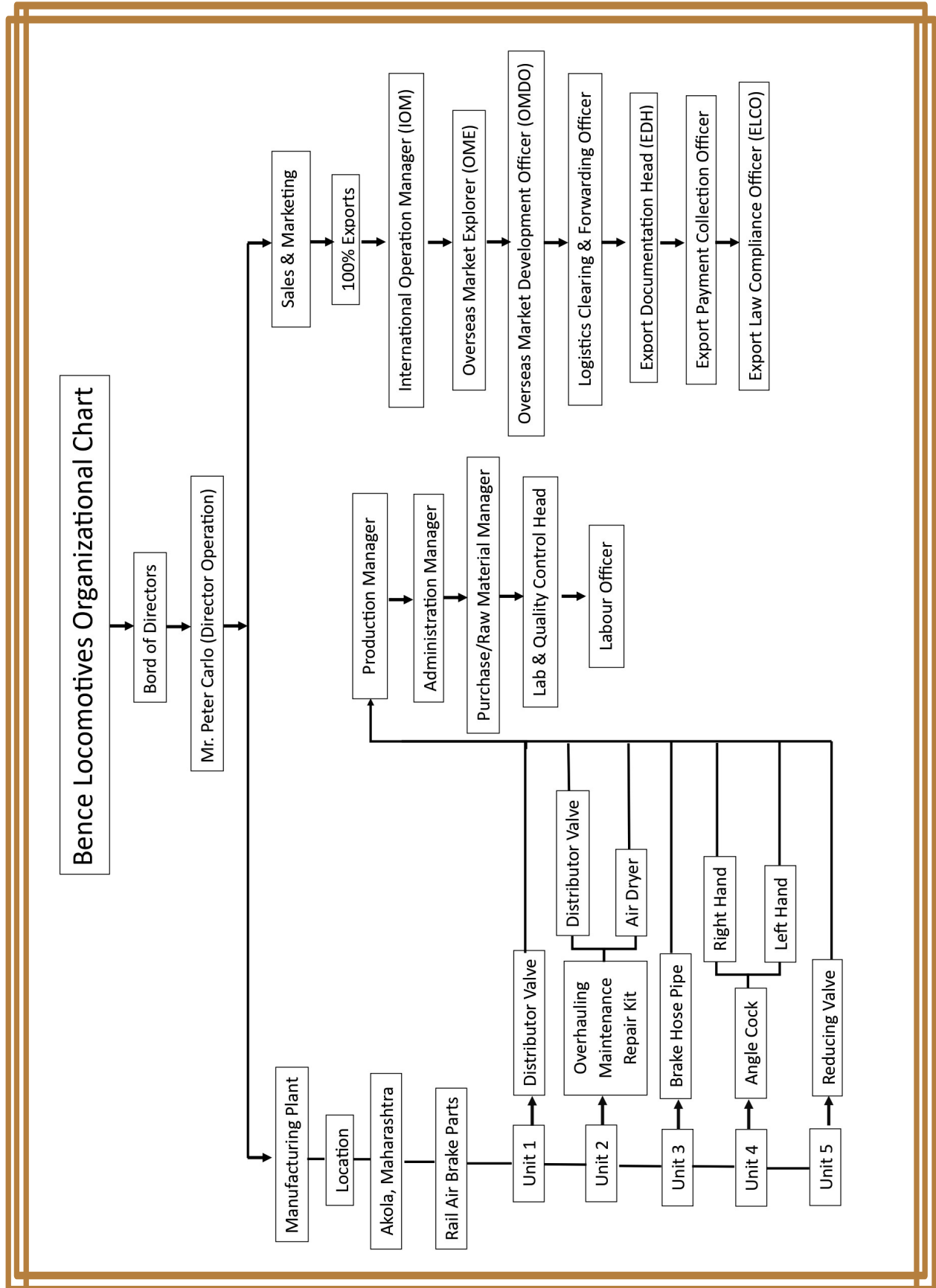




# Bence Locomotives

(Unit of Bence Auto Industries)

"Every Steps in Rail & Locomotive Parts"





# Bence Locomotives

(Unit of Bence Auto Industries)

"Every Steps in Rail & Locomotive Parts"

## Certificate of Registration



This is to certify that

**BENCE LOCOMOTIVES**  
(Unit of Bence Auto Industries)

2<sup>nd</sup> Floor, Office no.12, KK Chambers, Purshotamdashakurdas Road, Near Siddharth College Fortmumbai, Mumbai City, (M.H.)-581307, India.

Has been assessed and found to be in compliance with the requirements of the standards.

**ISO 45001:2018**  
(Occupational Health & Safety Management System)

For the following scope:

"MANUFACTURERS & EXPORTERS OF RAIL AIR BRAKE PARTS SUCH AS DISTRIBUTOR VALVE AND OVERHAULING REPAIR KITS, RELAY VALVE ANGLE END COCK, BRAKE PIPE HOSE COUPLING, LOCOMOTIVE ENGINE SPARES FOR EMD, GE, ALCO AND CATERPILLAR.  
EXPORT OF SERVICES: PROFESSIONAL CONSULTANT, PREPARATION OF BUSINESS PLANS, FEASIBILITY REPORT, REHABILITATION, TRAINING, REPAIRS & MAINTENANCE OR ANY OTHER TYPE OF SERVICES RELATING TO RAIL & LOCOMOTIVES."

Certificate No.: OH31121874

Certification Date : 31.12.2023

Issue Date : 01.01.2024

Date of Expiry\* : 31.12.2026

1<sup>st</sup> Surveillance Due : 31.12.2024

2<sup>nd</sup> Surveillance Due : 31.12.2025



Director Signature  
Date: 01.01.2024



\* validity of the certification is subject to successful completion of surveillance audit on or before of due date. (in case surveillance audit is not allowed to be conducted, this certificate shall be suspended / withdrawn)  
1<sup>st</sup> Floor, Jyoti Cineplex, M.P. Nagar Zone-1 Bhopal (M.P.) - 462011.  
Email id - [info@amarkratings.com](mailto:info@amarkratings.com), Website: [www.amarkratings.com](http://www.amarkratings.com), Phone No. 0755-4938413

## Certificate of Registration



This is to certify that

**BENCE LOCOMOTIVES**  
(Unit of Bence Auto Industries)

2<sup>nd</sup> Floor, Office no.12, KK Chambers, Purshotamdashakurdas Road, Near Siddharth College Fortmumbai, Mumbai City, (M.H.)-400001, India.

Has been assessed and found to be in compliance with the requirements of the standards.

**ISO 9001:2015**  
(Quality Management System)

For the following scope:

"MANUFACTURERS & EXPORTERS OF RAIL AIR BRAKE PARTS SUCH AS DISTRIBUTOR VALVE AND OVERHAULING REPAIR KITS, RELAY VALVE ANGLE END COCK, BRAKE PIPE HOSE COUPLING, LOCOMOTIVE ENGINE SPARES FOR EMD, GE, ALCO AND CATERPILLAR.  
EXPORT OF SERVICES: PROFESSIONAL CONSULTANT, PREPARATION OF BUSINESS PLANS, FEASIBILITY REPORT, REHABILITATION, TRAINING, REPAIRS & MAINTENANCE OR ANY OTHER TYPE OF SERVICES RELATING TO RAIL & LOCOMOTIVES."

Certificate No.: QM31121872

Certification Date : 31.12.2023

Issue Date : 01.01.2024

Date of Expiry\* : 31.12.2026

1<sup>st</sup> Surveillance Due : 31.12.2024

2<sup>nd</sup> Surveillance Due : 31.12.2025



Director Signature  
Date: 01.01.2024



\* validity of the certification is subject to successful completion of surveillance audit on or before of due date. (in case surveillance audit is not allowed to be conducted, this certificate shall be suspended / withdrawn)  
1<sup>st</sup> Floor, Jyoti Cineplex, M.P. Nagar Zone-1 Bhopal (M.P.) - 462011.  
Email id - [info@amarkratings.com](mailto:info@amarkratings.com), Website: [www.amarkratings.com](http://www.amarkratings.com), Phone No. 0755-4938413

**Better Parts. Better Service.**  
**Bence Locomotives**

## Certificate of Registration



This is to certify that

**BENCE LOCOMOTIVES**  
(Unit of Bence Auto Industries)

2<sup>nd</sup> Floor, Office no.12, KK Chambers, Purshotamdashakurdas Road, Near Siddharth College Fortmumbai, Mumbai City, (M.H.)-400001, India.

Has been assessed and found to be in compliance with the requirements of the standards.

**ISO 14001:2015**  
(Environmental Management System)

For the following scope:

"MANUFACTURERS & EXPORTERS OF RAIL AIR BRAKE PARTS SUCH AS DISTRIBUTOR VALVE AND OVERHAULING REPAIR KITS, RELAY VALVE ANGLE END COCK, BRAKE PIPE HOSE COUPLING, LOCOMOTIVE ENGINE SPARES FOR EMD, GE, ALCO AND CATERPILLAR.  
EXPORT OF SERVICES: PROFESSIONAL CONSULTANT, PREPARATION OF BUSINESS PLANS, FEASIBILITY REPORT, REHABILITATION, TRAINING, REPAIRS & MAINTENANCE OR ANY OTHER TYPE OF SERVICES RELATING TO RAIL & LOCOMOTIVES."

Certificate No.: EM31121873

Certification Date : 31.12.2023

Issue Date : 01.01.2024

Date of Expiry\* : 31.12.2026

1<sup>st</sup> Surveillance Due : 31.12.2024

2<sup>nd</sup> Surveillance Due : 31.12.2025



Director Signature  
Date: 01.01.2024



\* validity of the certification is subject to successful completion of surveillance audit on or before of due date. (in case surveillance audit is not allowed to be conducted, this certificate shall be suspended / withdrawn)  
1<sup>st</sup> Floor, Jyoti Cineplex, M.P. Nagar Zone-1 Bhopal (M.P.) - 462011.  
Email id - [info@amarkratings.com](mailto:info@amarkratings.com), Website: [www.amarkratings.com](http://www.amarkratings.com), Phone No. 0755-4938413

**CE CERTIFICATION**



## Certificate of Compliance

This is to Certify that the following designated products :

Rail & Locomotive parts such as Distributor Valve, Repair Kit for Distributor Valve, Air Dryer Repair Kit, Air Pressure, Reducing Valve, Relay Valve, Angle Cock (Right & Left), Brake Pipe Hose Coupling, Bearings & Bushes, Compressor Spare Parts such as Connecting Rod, Piston & Piston Rings, Engine spare parts for EMD, GE, ALCO and Caterpillar for Goods & Passengers Rail & Locomotives.

- This certificate is issued under the following conditions:
- It applies only to the above referenced set of products mentioned above. The manufacturer is obligated to assure that all products of the respective model conform to the type assessed by this certificate.
- The Certificate validity is conditioned by the positive result of the surveillance audits.
- The Certificate remains valid until the manufacturing conditions, the quality systems or relevant legislation are changed but until the 24/04/2026.
- After Fulfilling the EU legislation requirements, the manufacturer shall affix to each product of the above referenced models, CE-Marking according to the following example

Manufactured By

**BENCE LOCOMOTIVES**  
(Unit of Bence Auto Industries)

2<sup>nd</sup> Floor, Office No 12, K K Chambers, Purshotamdas Thakurdas Road, Near Siddharth College, Fort Mumbai, Mumbai City, Maharashtra, 400001, India

Conforms with the Applicable requirements of Machinery Directive 2006/42/EC

CERTIFICATE No. : 23ZGC10822C

ISSUED DATE : 25/04/2023

1<sup>ST</sup> SURVEILLANCE : 24/04/2024

EXPIRY DATE : 24/04/2026

2<sup>ND</sup> SURVEILLANCE : 24/04/2025



Authorised Signatory  
INTERNATIONAL QUALITY CERTIFICATION SERVICES UK LTD  
272, Bath Street, Glasgow, G2 4JR, U.K.



\* This Certificate is Intellectual Property of IQCS and can be maintained through surveillance and renewal audits. Certificate should be renewed to IQCS in case of non-compliance or certification procedure. Authenticity of this certificate can be verified at [www.ukacert.co.uk](http://www.ukacert.co.uk) or [www.iqcs.org.uk](http://www.iqcs.org.uk)



# Celebrating 25 Years Of Expertise



For more information Visit our website

[www.raillocodistributorvalves.com](http://www.raillocodistributorvalves.com)

### Other Websites:

[www.railairbrakeparts.com](http://www.railairbrakeparts.com)

[www.railrepairkit.com](http://www.railrepairkit.com)

[www.lococompressorparts.com](http://www.lococompressorparts.com)

Follow us on:



### Email:

[raillocodistributorvalve@gmail.com](mailto:raillocodistributorvalve@gmail.com)

[askbence@railrepairkit.com](mailto:askbence@railrepairkit.com)

### Ready to assist you

Pan India No. +91 9920013655

Mr. Peter Carlo



(Director Operations)

+91 9819664898

Ms. Bhavana Kamble



(Customer Service Executive)

+91 9324263974

Mr. Shaz Khan



(Locomotive Engineer)

+91 8850856300



2nd Floor, Office NO. 12, KK Chambers,  
Purshomtandas Thakurdas Road, Near  
Siddharth college, Fort Mumbai, 400001 India

01/06/2024

We, Bence Locomotives confirm that we are not affiliated with WABCO (OEM) regarding exhibited/ mentioned products on our webpage, catalogue, and/or brochures, manufacturers' names, numbers, specifications and descriptions are used for reference only. It is not implied that any part listed is the product of these manufacturers.